

# Klamath Basin Hydrology

OREGON



WATER RESOURCES  
DEPARTMENT

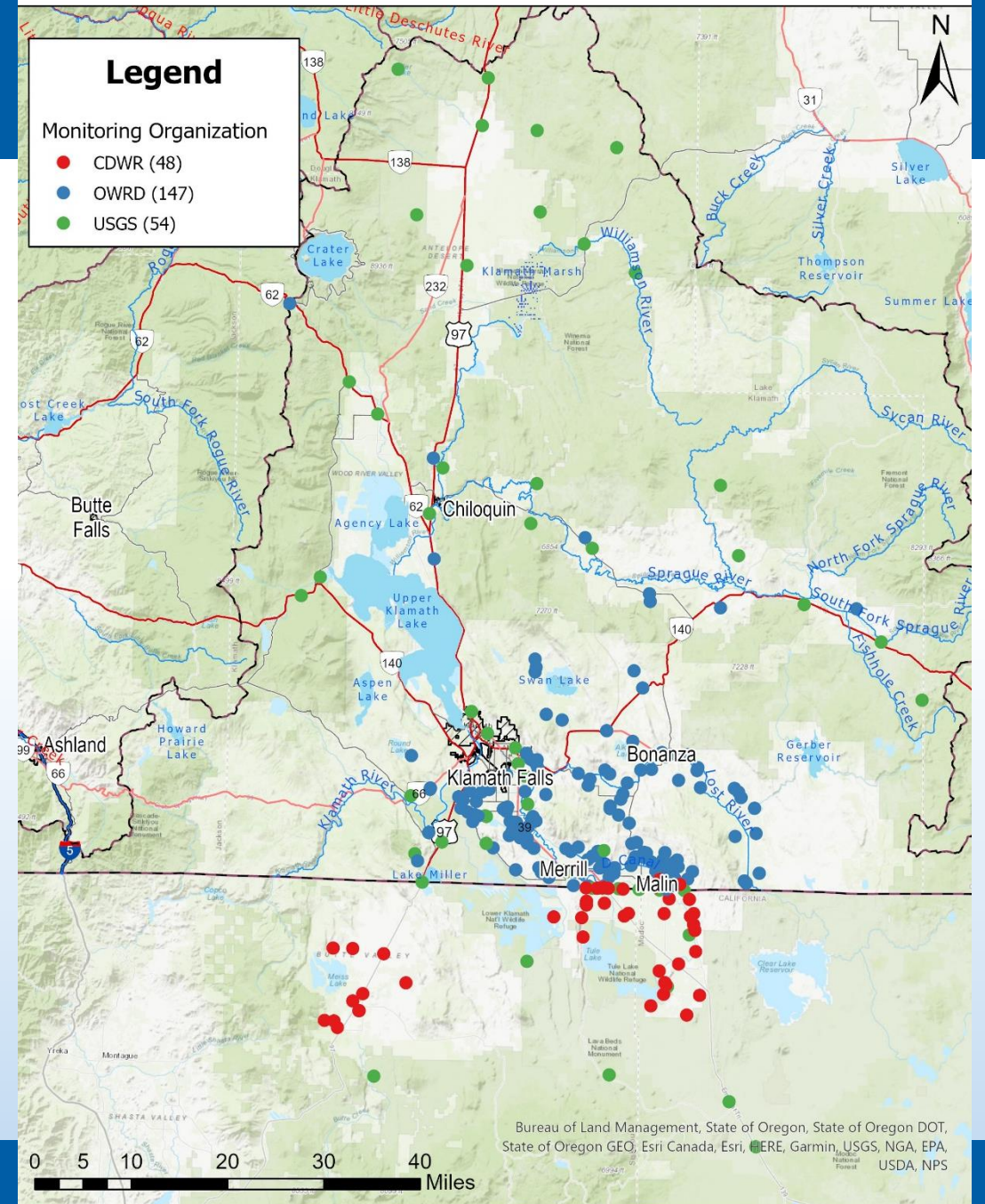
**Ivan Gall – Interim Deputy Director**  
**December 14, 2022**



OREGON  
WATER  
RESOURCES  
DEPARTMENT

# Klamath Wells Monitored

**OWRD = ~147 wells**  
**USGS = ~54 wells**  
**CDWR = ~48 wells**

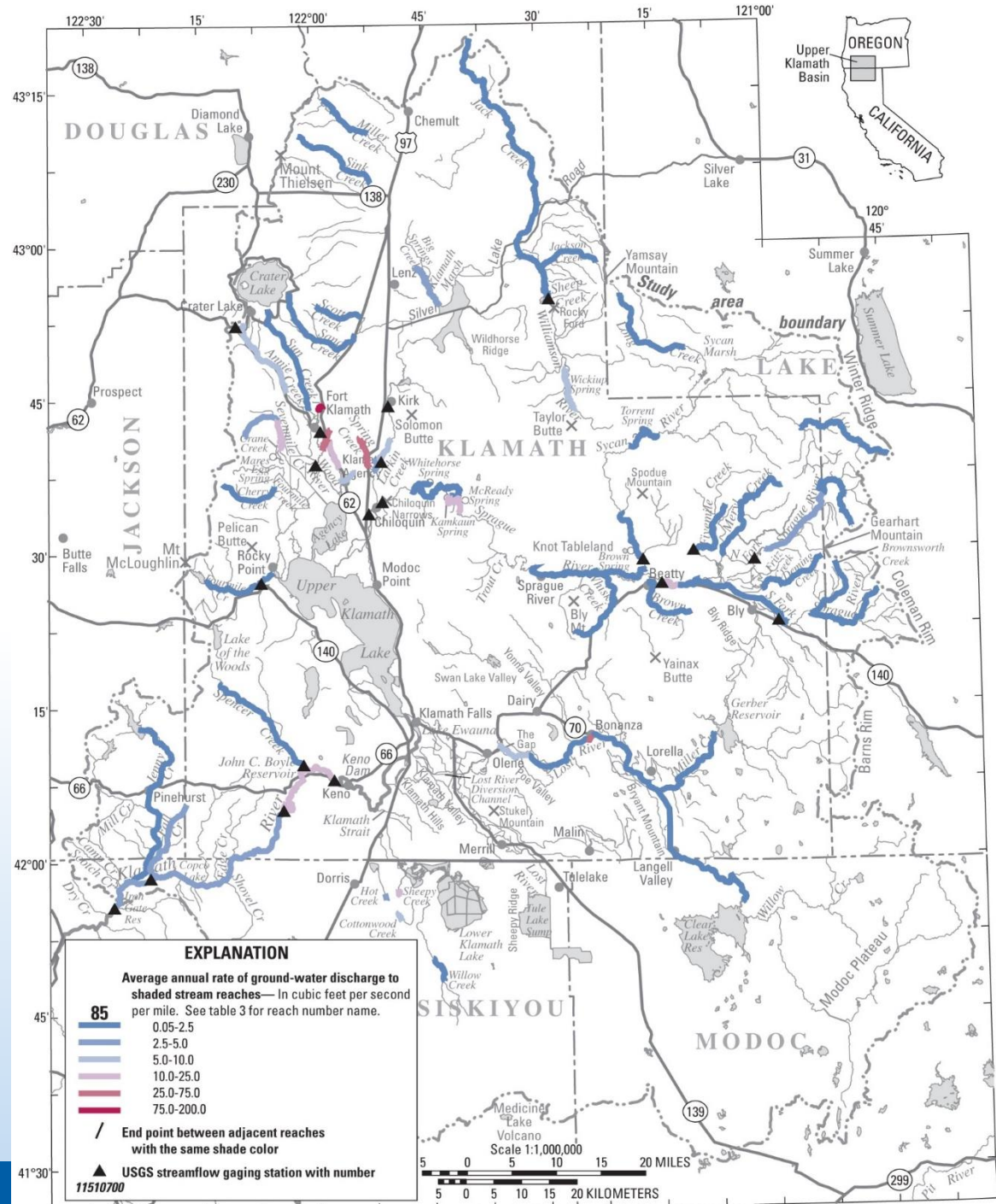




OREGON  
WATER  
RESOURCES  
DEPARTMENT

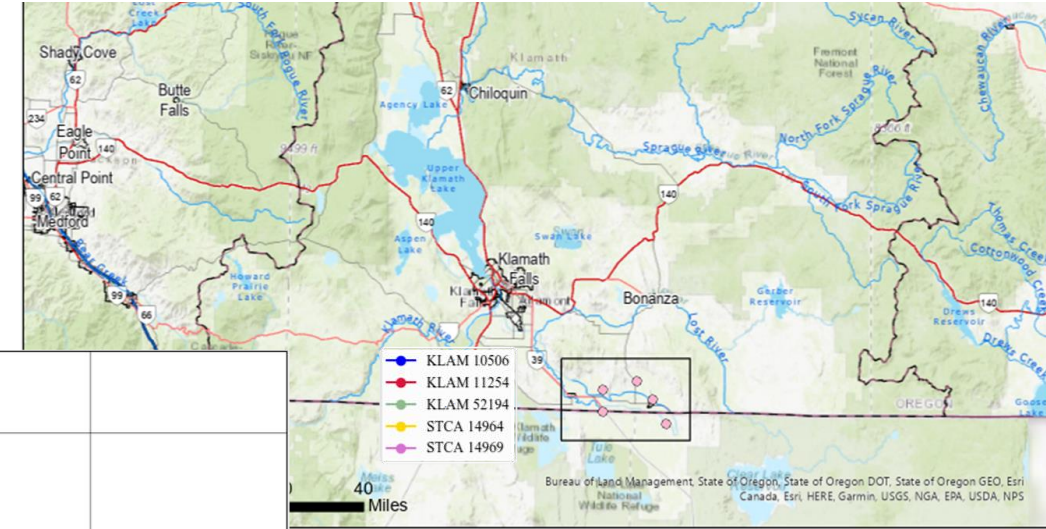
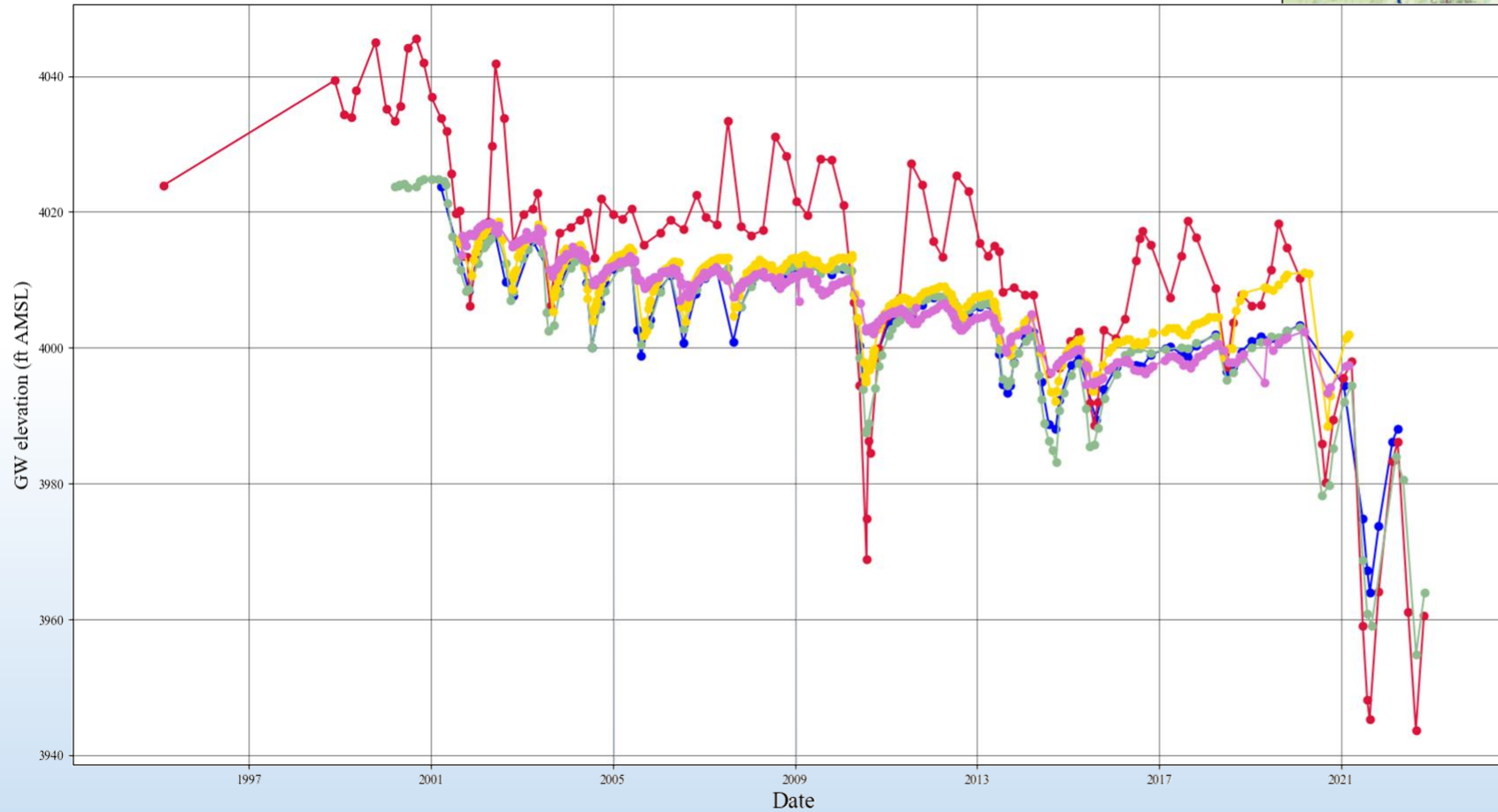
**Groundwater discharges to streams throughout the upper Klamath Basin, supporting substantial streamflow.**

**Total discharge is ~ 2,400 ft<sup>3</sup>/s.  
Flow directly to Upper Klamath Lake is ~ 320-350 ft<sup>3</sup>/s.**





Observation Well Data



**Example of  
groundwater  
pumping removing  
groundwater from  
storage in the aquifer  
system**